

Bachrun LoMele

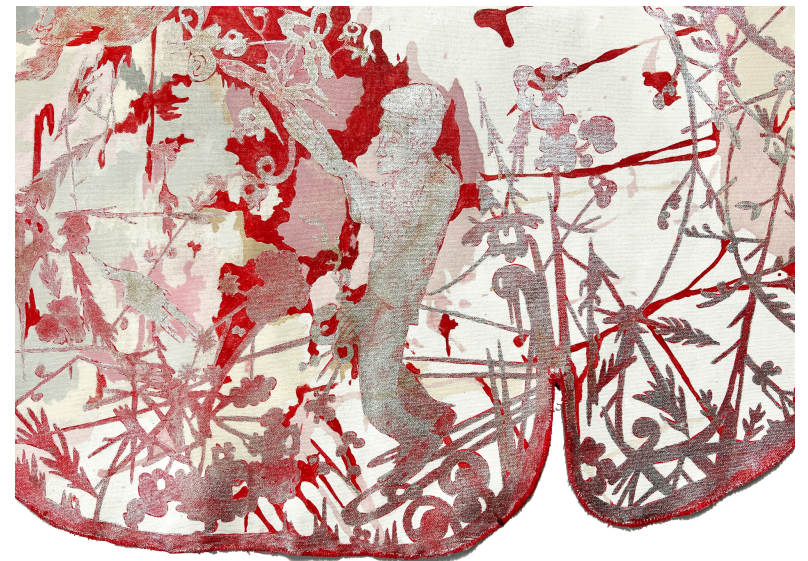
## *Punch Table*



*Restored Punch Table Relic*, 34.5in x 54in, acrylic, aluminum leaf, inks, crowd-sourced spilled jamaica punch on canvas, 2013-2025

Artist statement:

Inner experience changes through social interaction. With *Punch Table*, I set up a situation whereby art viewers would inadvertently cause punch to spill and stain a carefully prepared tablecloth, upon which I had spent months creating a design in aluminum leaf on white fabric, of motifs representing nature-love, and shyness. Staining then occurred as a result of art-celebrants approaching the deliberately wobbly punch table to look at it, and perhaps to accept a cup of punch. I subsequently attempted a restoration of the designs, using different colors to indicate the differing degrees of staining.





*Restored Punch Table Fragment 1*, 21in x 25in, acrylic, aluminum leaf, inks, crowd-sourced spilled jamaica punch on canvas, 2013-2025



*Restored Punch Table Fragment 2*, 21in x 25in, acrylic, aluminum leaf, inks, crowd-sourced spilled jamaica punch on canvas, 2013-2025